

## GIS Edition

# ECUADOR 2010 CENSUS (ADM 5)

- 100% population coverage
- 50,201,515 data points
- ADM 5 for 40,649 census units
- 1,235 census variables

**More than numbers.** Census data provides unparalleled insight into the lives of individuals. East View presents the Ecuador 2010 Census as part of the East View Global Census Archive® (GCA). The Ecuador 2010 Census addresses a wide range of topics at the highest level of detail possible.

**Making information available.** When initially acquired, the census data is stored in a complex database structure, with attribute descriptions in Spanish, limiting access to those with significant database management and programming experience. East View simplifies access, formatting the collection into an easy-to-use geodatabase which can be visualized using any GIS software and providing a comprehensive guide. Additionally, East View provides the original census documentation, allowing researchers to see first-hand how the data was gathered.

**Note:** The Ecuador 2001, 2010 (ADM 6), and 2022 censuses (GIS editions) are also available through GCA

## CENSUS OVERVIEW

<b>Year:</b> 2010	<b>Polygons at ADM:</b> 40,649
<b>Population Coverage %:</b> 100	<b>Number of Questions:</b> 91
<b>Geography Coverage %:</b> 100	<b>Number of Answers:</b> 1,235
<b>Smallest Geography Name:</b> Sectores	<b>Data Points:</b> 50,201,515
<b>ADM Level:</b> 5	<b>Urban/FG:</b> FG

### Notes

- Population Coverage % indicates the percentage of total population of the country during the census year that this census covers
- Geography Coverage % indicates the percentage of the total area of the country covered by the ADM polygons in this census
- Urban/FG indicates if this census provides Full Geographic (FG) coverage or if coverage is limited to Urban (U) or populated places

## DELIVERABLES

The Ecuador 2010 Census has 100% population coverage, over 50 million data points, and consists of:

### Geodatabase

- Intuitive organization of census data
- Administrative boundary vector data at ADM 5 (Sectores) for 40,649 census units
- Vector and aggregated tabular data at the Sectores level

### Shapefiles

- All vector and census data in ESRI Shapefile format

### Census Guide

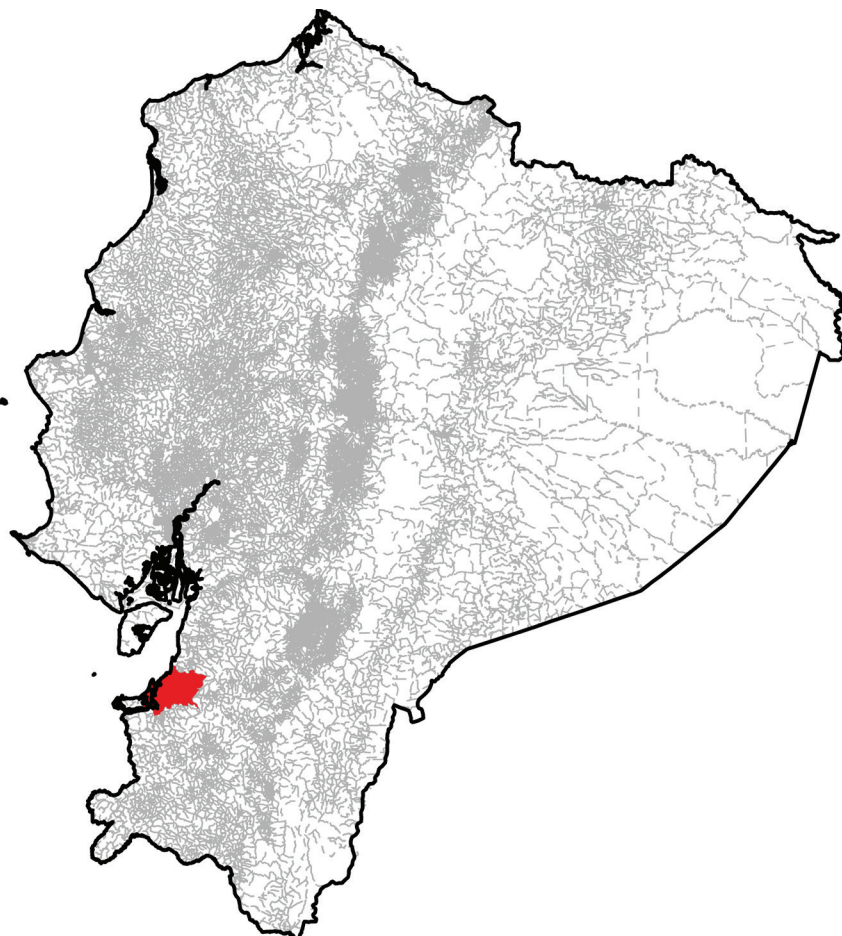
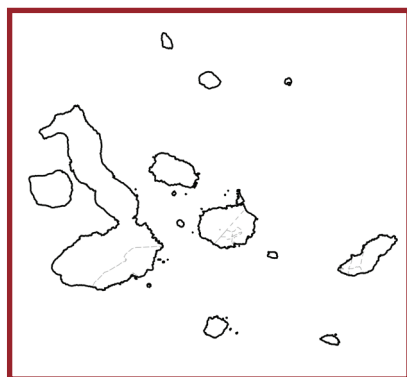
- Detailed descriptions for 1,235 census variables

### Original Census Documentation and Database

- Delivered in native format
- Census questionnaires

### Metadata

- Full attribute level metadata in FGDC ISO format



ADM 5/0 boundaries for all of Ecuador, with inset detail of the Galapagos; area in red, over Machala, is available as sample data

## CENSUS QUESTIONS

Below is a representative sample of census questions included in the Ecuador 2010 Census (ADM 5):

### 1. Demographic

Relationship / Sex / Birth data and age / Marital status / Fertility

### 2. Migration

Place of birth / Citizenship / Duration of residence / Usual residence

### 3. Social

Literacy / Educational attainment / Field of Education / Language / Ethnicity and indigenous peoples / Disability

### 4. Economic

Activity status / Occupation / Industry / Status in employment / Place of work

### 5. Housing

Living quarters / Location of living quarters / Occupancy status / Rooms / Bedrooms / Useful floor space / Water supply system / Drinking water / Toilet / Sewage disposal / Bathing facilities / Kitchen / Fuel used for cooking / Lighting and/or electricity / Solid waste disposal / Heating / Hot water / Piped gas / Use of housing unit / Number of occupants / Building type / Construction material of outer walls / Construction material of floor, roof / Elevator / Farm building / State of repair

**For more information about the Ecuador 2010 Census (ADM 5), including the availability of corresponding non-GIS materials (published results, supporting questionnaires, other census ephemera, etc.), please contact [geospatial@eastview.com](mailto:geospatial@eastview.com)**