



More than numbers. Census data provides unparalleled insight into the lives of individuals. East View presents the Ecuador 2022 Census as part of the East View Global Census Archive® (GCA). The Ecuador 2022 Census addresses a wide range of topics at the highest level of detail possible.

Making information available. When initially acquired, the census data is stored in a complex database structure, with attribute descriptions in Spanish, limiting access to those with significant database management and programming experience. East View simplifies access, formatting the collection into an easy-to-use geodatabase which can be visualized using any GIS software and providing a comprehensive guide. Additionally, East View provides the original census documentation, allowing researchers to see first-hand how the data was gathered.

Note: The Ecuador 2001, 2010 (ADM 5), and 2010 (ADM 6) censuses (GIS editions) are also available through GCA

CENSUS OVERVIEW

Year: 2022	Polygons at ADM: 52,898
Population Coverage %: 95	Number of Questions: 116
Geography Coverage %: 100	Number of Answers: 1,139
Smallest Geography Name: Sectores	Data Points: 60,197,924
ADM Level: 5	Urban/FG: FG

Notes

- Population Coverage % indicates the percentage of total population of the country during the census year that this census covers
- Geography Coverage % indicates the percentage of the total area of the country covered by the ADM polygons in this census
- Urban/FG indicates if this census provides Full Geographic (FG) coverage or if coverage is limited to Urban (U) or populated places

DELIVERABLES

The Ecuador 2022 Census has 95% population coverage, over 60 million data points, and consists of:

Geodatabase

- Intuitive organization of census data
- Administrative boundary vector data at ADM 5 (Sectores) for 52,898 census units
- Vector and aggregated tabular data at the Sectores level

Shapefiles

- All vector and census data in ESRI Shapefile format

Census Guide

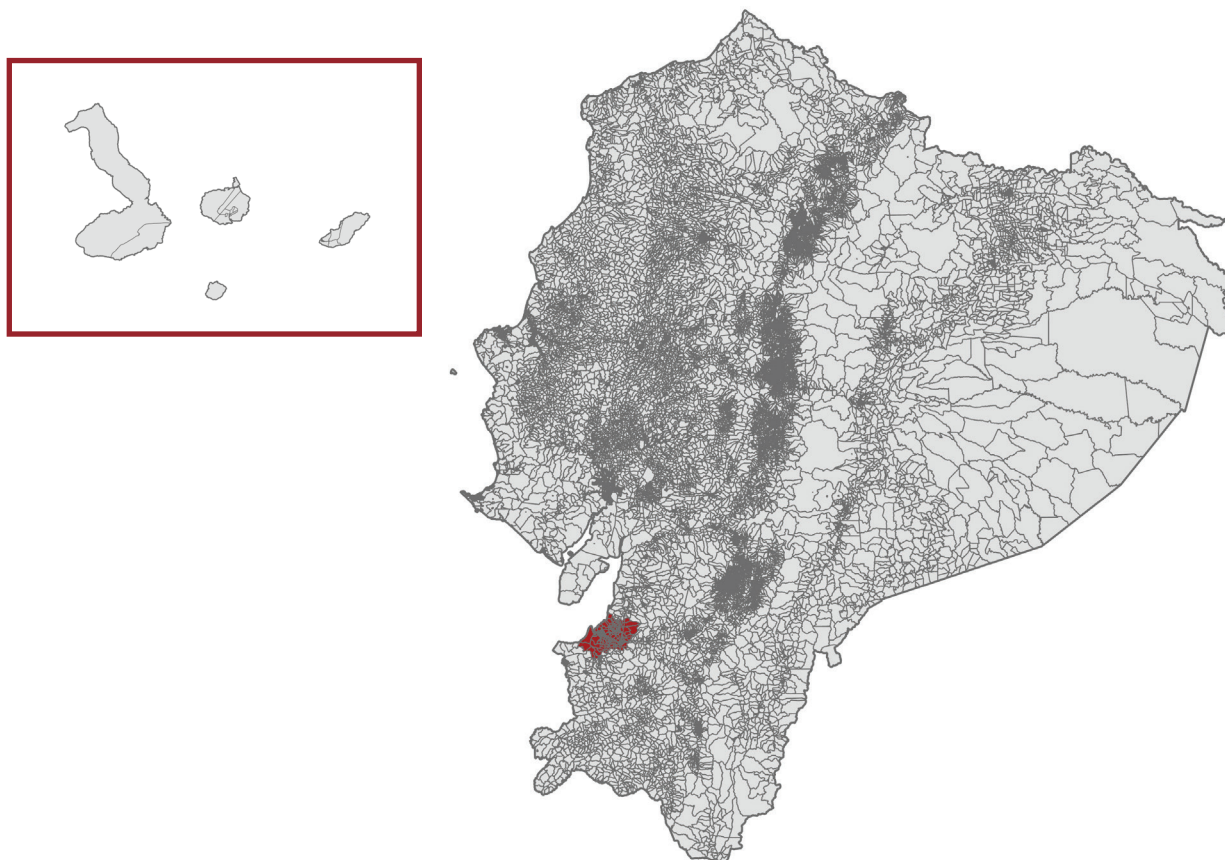
- Detailed descriptions for 1,139 census variables

Original Census Documentation and Database

- Delivered in native format
- Census questionnaires

Metadata

- Full attribute level metadata in FGDC ISO format



ADM 6/0 boundaries for all of Ecuador with inset detail of the Galapagos; area in red, over El Oro province, is available as sample data

CENSUS QUESTIONS

Below is a representative sample of c

1. Demographic

Sex / Birth data and age / Marital status

2. Migration

Place of birth

3. Social

Literacy / School attendance / Educational attainment/ Native language

4. Economic

Employment status/ Occupation

5. Housing

Occupancy status / Waste disposal method / Number of occupants / Building type / Construction material of floor, roof / Number of pets

For more information about the Ecuador 2022 Census, including the availability of corresponding non-GIS materials (published results, supporting questionnaires, other census ephemera, etc.), please contact geospatial@eastview.com