

EVMaritime Vector & EVMaritime Raster Data

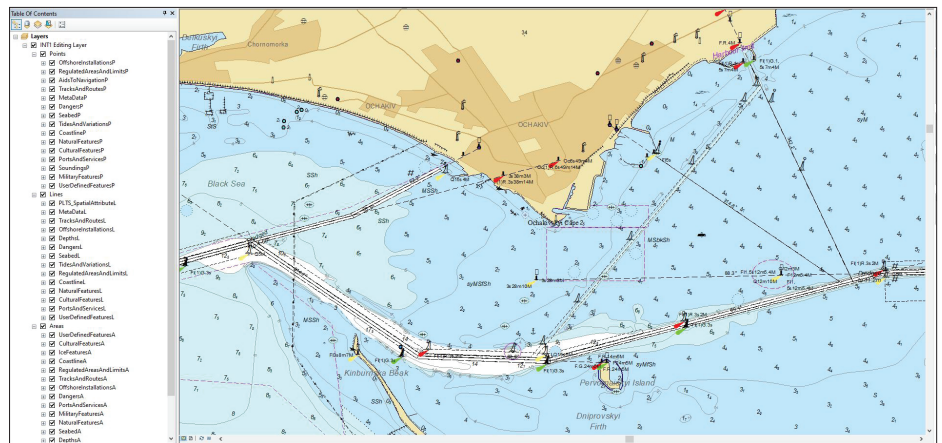
East View Geospatial is pleased to bring to the GIS-fluent research and analytical community a wide range of vector and raster products produced from authoritative maritime and hydrographic sources. Known to navigators worldwide, vector-based Electronic Navigation Charts (ENCs) and their raster cousins RNCs have long provided unique and useful content to non-navigational users, just like print nautical charts before them.

Beginning with US hydrographic authorities (NOAA, USACE, NGA, and others) and expanding abroad with cooperating national hydrographic authorities (New Zealand—LINZ, Philippines—NAMRIA, Ukraine—SHSU, and others), EVG has developed and is releasing a series of water-body-oriented vector and raster GIS products: **EVMaritime Vector Data** and **EVMaritime Raster Data**.

The vector products combine all ENC scales, without overlap, into one seamless mosaic of data giving users the most detailed GIS database. The vector product is an Esri file geodatabase (.GDB) with schema, symbology, font, labelling, domains, and aliases fully applied.

The associated raster product is a fully cropped and georeferenced GeoTiff that covers the extent of the respective vector data.

These products dramatically save professionals time by delivering pre-assembled mosaics of vector and raster products. EVG builds these products starting with the most detailed ENCs and moving out to the least detailed, where necessary, to complete a full mosaic of data coverage.



Whether using vector or raster products, customers will find it easy to identify specific features for use in their research. These features include but are not limited to:

- Bathymetry
- Undersea cables
- Wrecks
- Offshore oil platforms
- Military areas
- Navigation routes
- Regulated areas
- Buoys
- Airports
- Landmarks
- Danger points
- Natural feature descriptions

Currently Available Countries and Regions Include:

Canada (Gulf of St. Lawrence; Newfoundland Sea; Bay of Fundy; Hudson Bay; Northern Canadian Waters; Vancouver Island)

Ukraine (Black Sea, Azov Sea; Rivers)

USA (Great Lakes; Atlantic coast and sectors; Gulf of Mexico; Pacific coast and sectors; Alaska sectors; Rivers)

EVMaritime Vector and Raster – Sample Data

East View Geospatial has created a sample dataset covering Lake Michigan, USA.

Vector Sample Information

Region: Great Lakes

Waterbody Coverage: Lake Michigan

Number of ENC's in Dataset: 47

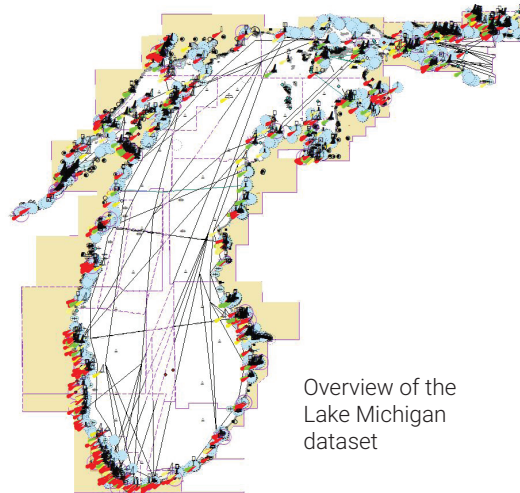
Sample will include the following:

Esri File Geodatabase: Contains the converted ENC to GIS (fGDB) data.

Fonts: Please install these to use the provided symbology layers properly.

Layer Files: INT1 and ENC pre-built layer files containing symbols and labelling. User will need to drag and drop these into their MXD and connect a single layer to the corresponding feature in the provided fGDB.

Map Package: If a user does not choose to drag and drop layer files, they may choose to double click on the map package and it will automatically open an MXD with connected database.



Overview of the Lake Michigan dataset

Raster Sample Information

Region: Great Lakes

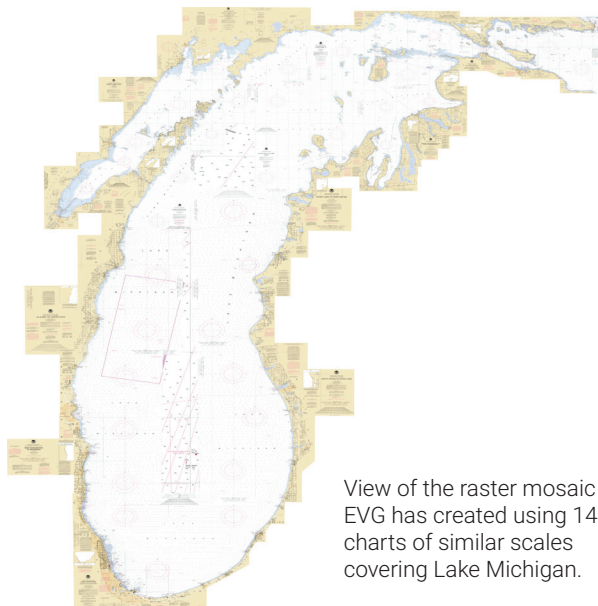
Waterbody Coverage: Lake Michigan

Number of Raster Charts: 14

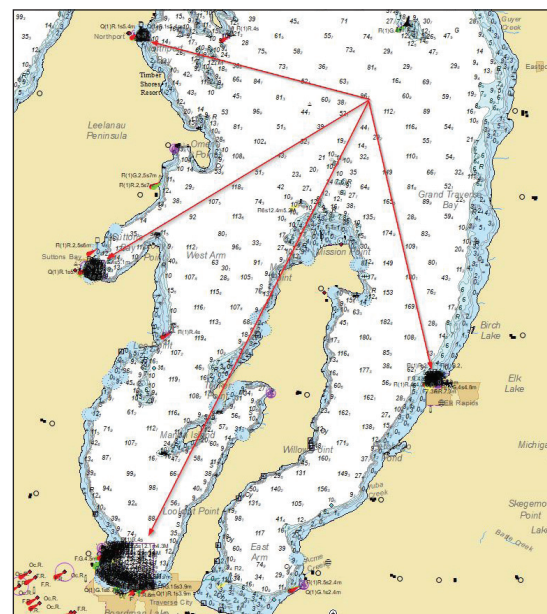
Sample will include the following:

GeoTiff: A single GeoTiff mosaic of 14 cropped and georeferenced nautical charts covering Lake Michigan.

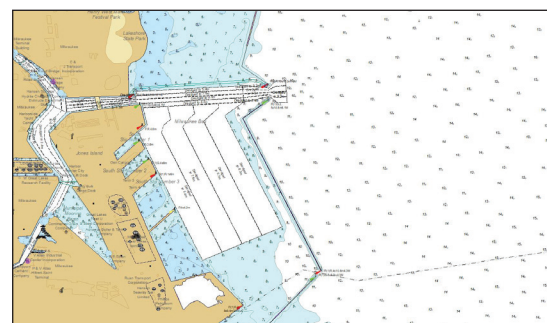
*****Products are NOT for navigation use*****



View of the raster mosaic EVG has created using 14 charts of similar scales covering Lake Michigan.



This image illustrates how EVG built the most detailed dataset. The arrows point to the ENC's with much more detail that were used to build out the dataset.



Zoomed look at the dataset with labelling and symbology in Milwaukee, WI