

Historical Mosaics: 1:5,000 scale mosaic of the Chernobyl electrical station

EAST VIEW GEOSPATIAL CAPABILITIES & SERVICES

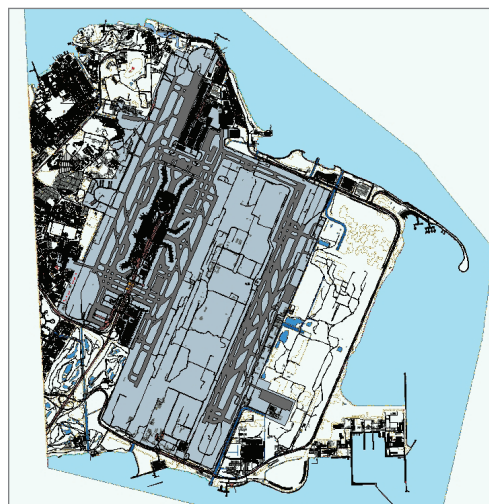
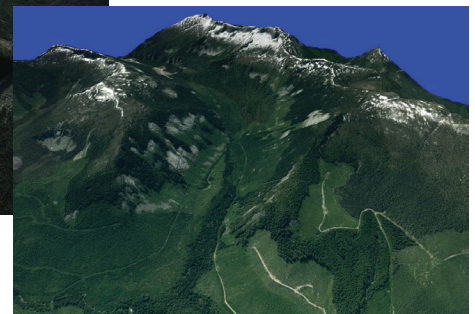
East View Geospatial has nearly 30 years' experience in sourcing, procuring, and producing geodata and population data. Utilizing a talented in-house team of geospatial analysts and production specialists, East View Geospatial offers a wide variety of services designed to suit your needs.

GEOINT

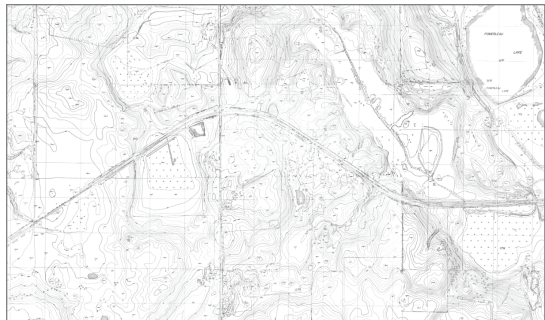
- ▶ **Foundation Data (FD) production**
 - TDS
 - MGCP
 - Other customer-specified schemas
- ▶ **Off-shore full-spec FD production**
 - CONUS QA/QC and project management
- ▶ **FD conflation and integration**
- ▶ **Cartographic production and finishing**
 - TM/MTM
 - JOG
 - TPC
 - Custom cartographic products
- ▶ **Data QC/QA**
 - Development of processes and workflows
 - Use of automated QA/QC tools, such as Data reviewer, Batch checks, and Geospatial Analysis Integrity Tool (GAIT)
- ▶ **Training and capacity building for data production and/or cartographic finishing**
 - In-person or remote training
 - Proprietary documentation
- ▶ **Imagery analysis/intelligence gathering**



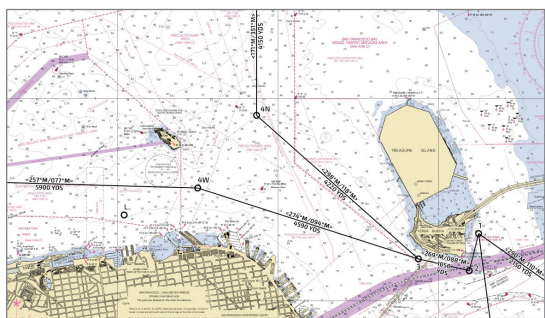
3D/DEM Production: 50cm DTM
created from high resolution aerials



Data Collection:
1:2,000 scale data collection
over Singapore from high
resolution imagery



Historical Mapping: 1:2,000 scale mosaic of Plymouth, MN section maps from the 1960s



Custom Mapping: Overlay of waypoints/track lines on a nautical chart



Custom Mapping: Custom multi-state map of New York, Vermont, and New Hampshire

COMMERCIAL

► Digitization

- Wide format preservation quality high-resolution scanning of map materials
- Newspaper/atlases on flatbed/cradle machines
- Image/text clean-up, Optical Character Recognition (OCR), translation services
- GIS feature data extraction from mapping materials into customer-specified data schema

► Print on demand

- Wide format printing (media options: economy and premium paper, Tyvek, adhesive, water-resistant, polypropylene, canvas, vinyl)
- Light manufacturing options: lamination, encapsulation, hanging bars, board/substrate mounting, framing, canvas framing, folding, trimming

► Raster production

- Image cleanup
- Georeferencing, map marginalia cropping
- Mosaicing/tiling of large datasets into JP2, ECW, GeoTIFF, COG, MBtiles, etc.
- Web Mapping Tiling Services (WMTS) mosaic production and data hosting
- IIIF-based data hosting and viewing
- Format conversions: CDRG, ECRG, MrSID, CIB and other formats

► GIS vector data collection: topographic/geological/nautical/aeronautical

- Feature extraction from raster maps, satellite/aerial imagery
- Building databases (1D, 2D, 2.5D, 3D)
- Custom map overlays (nautical and aeronautical charts)
- Airport Mapping Databases (AMDB)
- Land use/clutter data
- Format conversions: CAD, fGDB, VPF and other formats

► Imagery processing

- Orthorectification
- Pan-sharpen/color balance/mosaicking of multiple scenes
- Image clean-up, cloud removal, feathering
- GCP integration

► 3D/DEM production

- DSM/DTM production from aerial (up 1m spatial DEM resolution), overlapping mono, stereo imagery sources
- Format conversions: DTED, GeoTIFF, and other formats

► SAR data sourcing, processing, and analysis

► Professional translation services

- Chinese, Ukrainian, Arabic, Russian and other languages

► Metadata/cataloging services

- Collection cataloging, coverage index maps production
- ISO, FGDC and MARC records

INTERESTED IN MORE INFORMATION?

Contact geospatial@eastview.com to learn how East View Geospatial can support your organization's needs.