



EVG SOLUTIONS Feature Extraction for Local, County and State Government

Cost-effective solutions for updating and maintaining planimetric feature data for your county. A GIS administrator's job is to ingest, manage and distribute data in an efficient way to their users, not necessarily to produce it. As such, our research indicates that many counties struggle to keep their feature data and county databases up to date. This creates a need gap that East View Geospatial (EVG) can fill in an efficient and cost-effective manner for non-specialized data. With EVG's planimetric vector feature extraction services, counties will always have the latest data at their fingertips, giving GIS administrators and county planners a much clearer picture of the location and condition of buildings and other important features.

SOURCE DATA

EVG will work with county GIS administrators to determine the most appropriate source data to use for extraction. In many cases, this will be high-resolution aerial photography or LiDAR data supplied by the county. If such sources do not exist, EVG can offer aerial photography and/or satellite imagery coverage of the county for an additional fee.

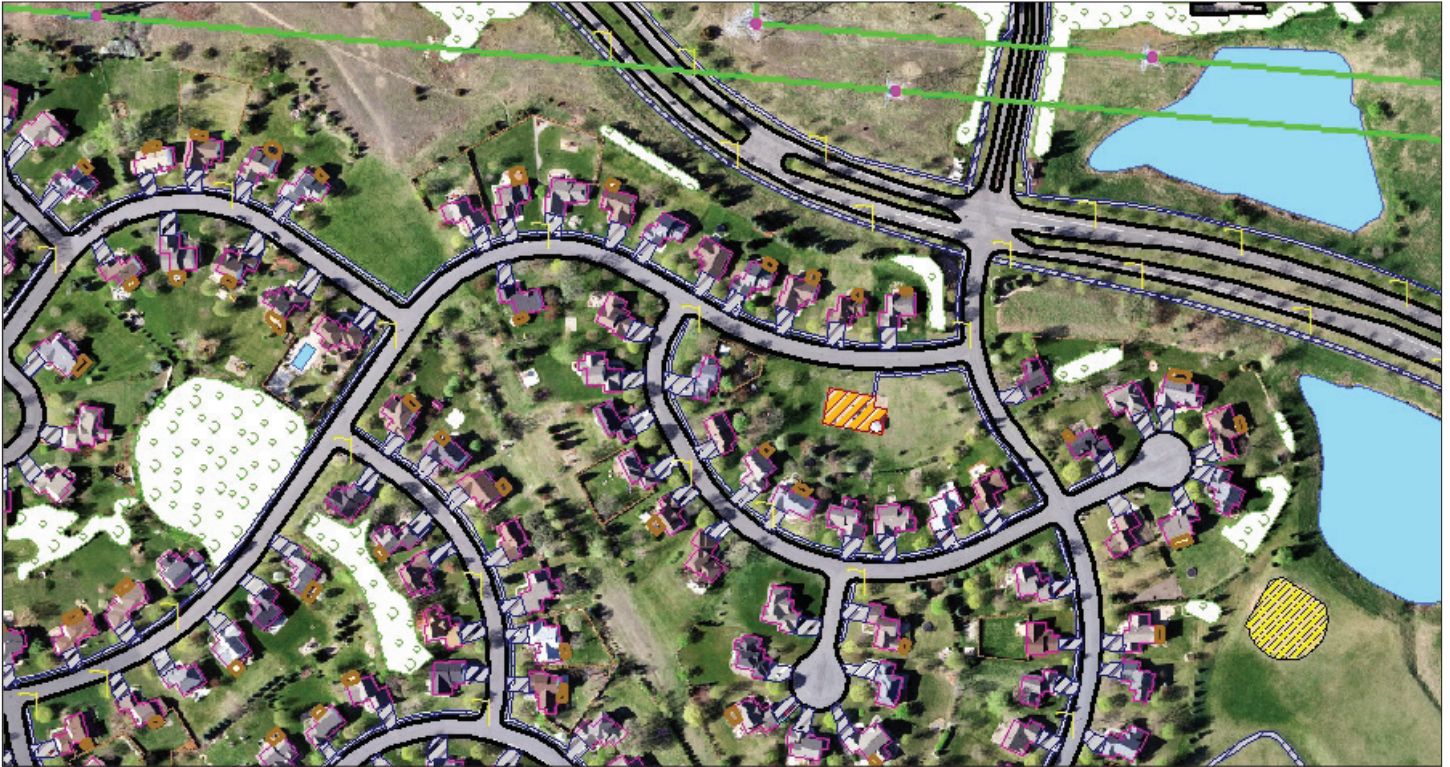
THE EAST VIEW ADVANTAGE

- Over 25 years' experience in sourcing, procuring, and producing geoinformation products
- Global network of content suppliers delivering authoritative datasets
- Headquarters in North America with representatives in Europe, Africa, Asia, South America and Oceania
- In-house team of geospatial analysts ensuring accurate deliverables
- Experts in geographic information systems, remote sensing, and cartography

FEATURE EXTRACTION

EVG will get your database up to date and keep it that way with annual updating services. Features that will be updated include:

- | | | | |
|------------------------|----------------------------|-------------------------|---------------------|
| • Asphalted Area | • Deck | • Parking | • Roads |
| • Bridges | • Driveways | • Paths/Sidewalks | • Shorelines |
| • Buildings | • Facility | • Pool | • Sporting Facility |
| • Cable Lines | • Highways | • Power Lines | • Streams |
| • Commercial Buildings | • Lakes | • Railway | • Streetlights |
| • Culverts | • Light Fences | • Residential Buildings | • Swamps |
| • Culverts | • Metal or Concrete Fences | • Road Signs | • Woods |



New feature extraction over Scott County, MN

PRICING MODELS

EVG offers the following planimetric vector feature extraction services:

- Initial extraction of features (comprehensive for entire county)
- Annual updates
- Full clutter (land use/land cover) database extraction and creation

Pricing for the above services is contingent on total area of the county and on the availability of low-cost or free source data. Data can be delivered in any GIS format required; typical delivery formats include shapefile or .gdb.



2.5D in Google Earth: Buildings extracted from aerial photography and 3D rendering accomplished with state-supplied LiDAR data (Scott County, MN)

Questions?

Contact us at geospatial@eastview.com for more information on planimetric vector feature extraction or request a customized quote