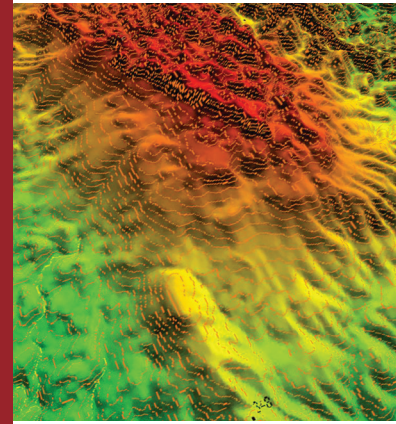


EYE ON THE WORLD

Products & Solutions for GEOINT

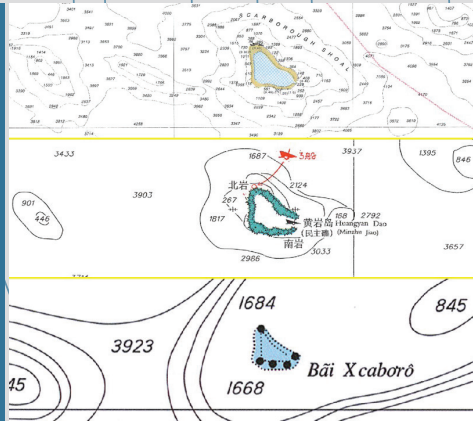
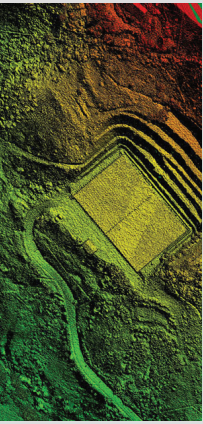
Uncommon Information. Extraordinary Places.



ces: The area is sparsely popula
ed places, with populations of 1
about 1,000) are within Iran, wh
y along Road 13. On Afghan terri
border post, Asparan (e.p. 4092)
places is mostly rectangular, de
e-story, stone or wattle-and-dau
oofs. Facades facing courtyards
rounded by blind divals. Little
s high. The streets are narrow,
oty out from day to November. I
e that locks the summer pasture
ing Iran, the best rural t
nd the station and telegraph servi
supply are drawn from kiryazes
collecting around water and del
wells of various depths (2 - 75
nals, and household reservoirs,
ains. The water in the irrigatio
ually heavily polluted and must
ation is unsatisfactory in the

DECLASSIFIED

Focused on GEOINT



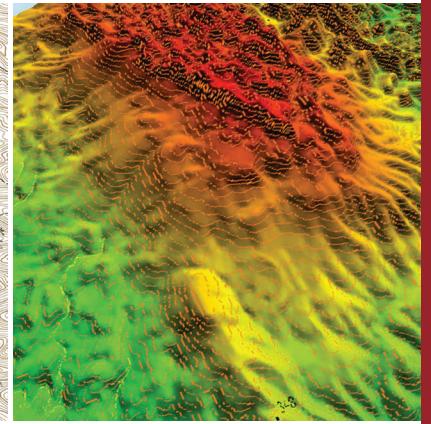
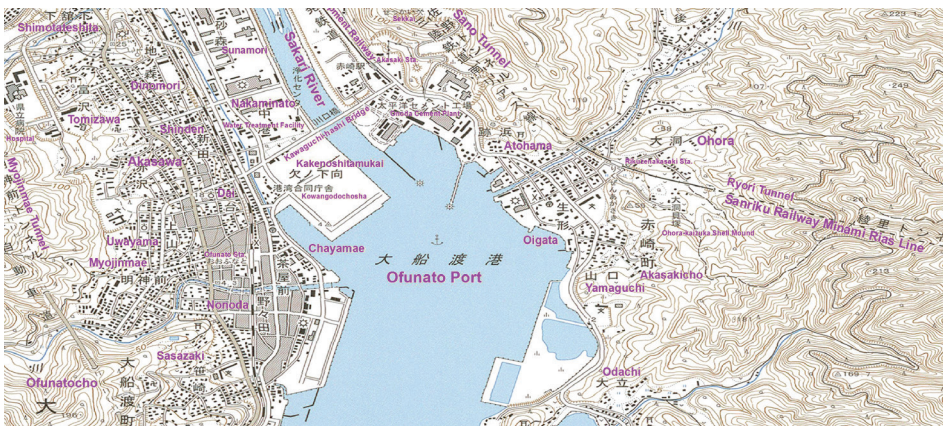
East View Geospatial has been serving the US government, defense contractors, foreign governments and think tanks for over twenty years with hard-to-source licensed content and value-add production and analytical services.

SOURCE | PRODUCTION | ANALYSIS



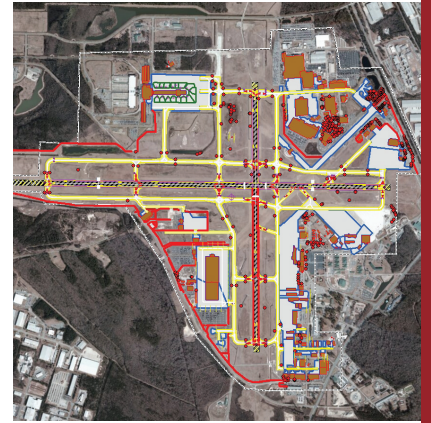
East View Geospatial first brought declassified Soviet military information to the West in the early 1990s. Since that time, East View Geospatial has built many products and solutions in service to GEOINT, including:

- ▶ TLM, MDG, MGCP, VMAP, DTED, DNC and CADRG geospatial production
- ▶ Satellite imagery sourcing, processing and analysis
- ▶ Order of battle imagery interpretation
- ▶ Geospatial, scientific and cultural sourcing missions in hard to penetrate countries
- ▶ Machine learning training data
- ▶ Geoname translation projects



Other Resources From East View:

- ▶ Russian, Chinese and Arabic current and archival databases
- ▶ Datafeeds of Russian and Chinese hard and social science content



Whether your mission is related to Northern Africa, China, Afghanistan or the Caucasus, East View Geospatial is your partner for sourcing and exploiting Uncommon Information from Extraordinary Places.

places: The area is sparsely populated places, with populations of 1 (f about 1,000) are within Iran, wh only along Road 13. On Afghan terri e border post, Asparan (e.p. 4092) d places is mostly rectangular, de one-story, stone or wattle-and-dau roofs. Facades facing courtyards, surrounded by blind divals. Little ers high. The streets are narrow, empty out from the center. They wh take their trucks to the market, store uding wood and the most rural t and telephone and telegraph servi r supplies are drawn from kiriyazes or collecting around water and del wells of various depths (2 - 75 canals) and household reservoirs, rains. The water in the irrigatio usually heavily polluted and must itation is unsatisfactory in the



East View Geospatial (EVG) maintains offices on six continents and employs a multilingual staff. EVG's distributed supplier network gathers off-the-shelf geospatial products and academic, statistical and media publishing. EVG has built metadata repositories representing open source information of various types and either already has or knows the whereabouts of critical open source information to support GEOINT for all parts of the world. This is a vital competency that few, if any, commercial enterprises can claim.

The next time you have to source authoritative content, consider asking East View Geospatial what is available over your area of interest.

CONTACT

Headquarters

10601 Wayzata Blvd

Minneapolis, MN 55305-1515 USA

web geospatial.com
email geospatial@eastview.com
tel. +1.952.252.1201
fax +1.952.252.1202

 @EVGeospatial

OFFICES & REPRESENTATIVES

Headquarters Minneapolis, MN USA

Africa Johannesburg, South Africa

Asia Beijing, China
Tokyo, Japan
Taipei, Taiwan

Europe Berlin, Germany
Moscow, Russia
Kyiv, Ukraine

Latin America Bogota, Colombia

Oceania Brisbane, Australia

