

More than numbers. Census data provides unparalleled insight into the lives of individuals. East View presents the Japan 2015 Census as part of the East View Global Census Archive® (GCA). The Japan 2015 Census addresses a wide range of topics at the highest level of detail possible.

Making information available. When initially acquired, the census data is stored in a complex database structure, with attribute descriptions in Japanese, limiting access to those with significant database management and programming experience. East View simplifies access, formatting the collection into an easy-to-use geodatabase which can be visualized using any GIS software and providing a comprehensive guide. Additionally, East View provides the original census documentation, allowing researchers to see first-hand how the data was gathered.

Note: The Japan 1995 and 2005 censuses (GIS editions) are also available through GCA

CENSUS OVERVIEW

Year: 2015	Polygons at ADM: 219,111
Population Coverage %: 100	Number of Questions: 14
Geography Coverage %: 99.2	Number of Answers: 507
Smallest Geography Name: Chome	Data Points: 111,089,277
ADM Level: 5	Urban/FG: FG

Notes

- Population Coverage % indicates the percentage of total population of the country during the census year that this census covers
- Geography Coverage % indicates the percentage of the total area of the country covered by the ADM polygons in this census
- Urban/FG indicates if this census provides Full Geographic (FG) coverage or if coverage is limited to Urban (U) or populated places

DELIVERABLES

The Japan 2015 Census has 100% population coverage, over 111 million data points, and consists of:

Geodatabase

- Intuitive organization of census data
- Administrative boundary vector data at ADM 5 (Chome Level) for 219,111 census units
- Vector and aggregated tabular data at the Chome level

Shapefiles

- All vector and census data in ESRI Shapefile format

Census Guide

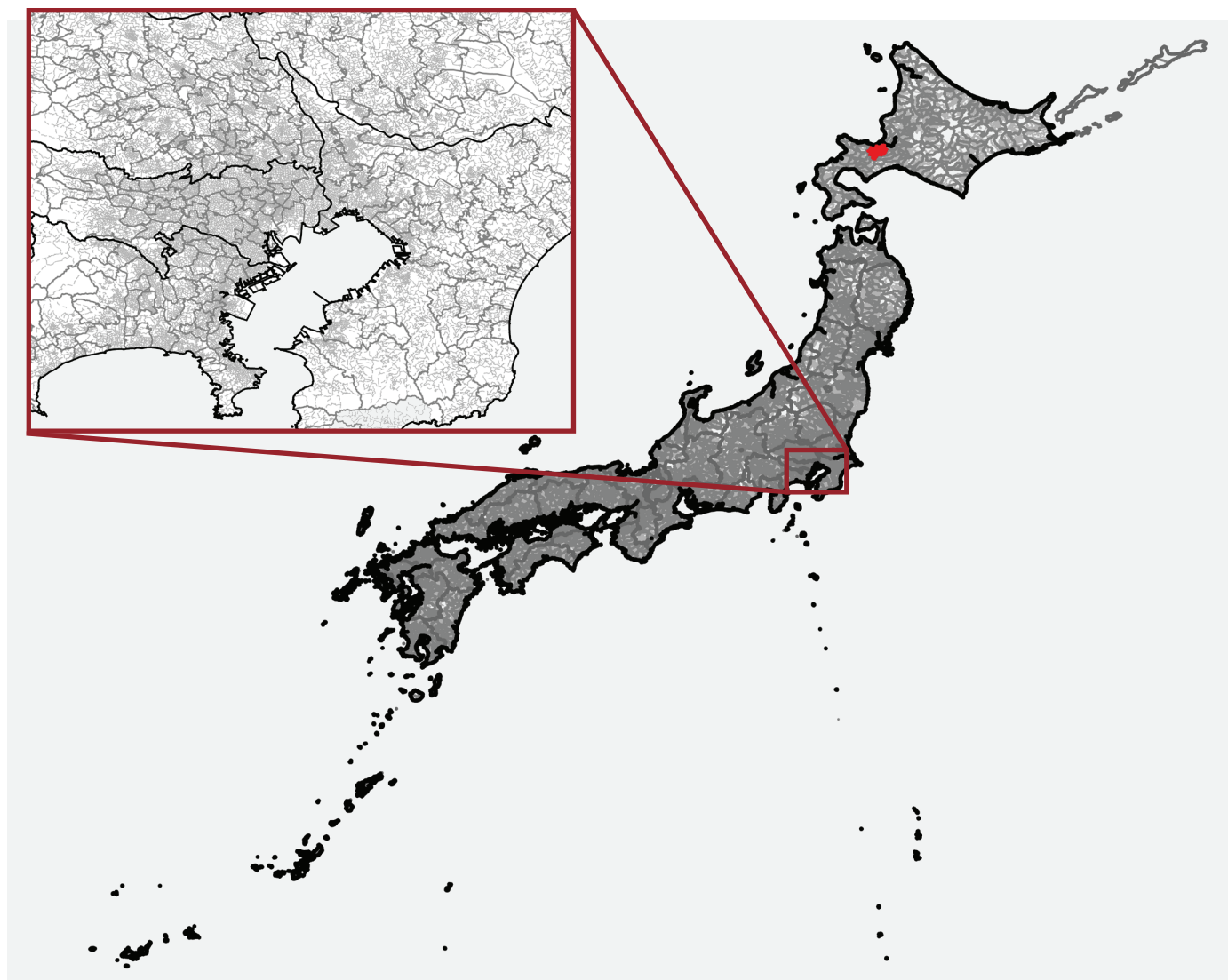
- Detailed descriptions for 507 census variables

Original Census Documentation and Database

- Delivered in native format
- Census questionnaires

Metadata

- Full attribute level metadata in FGDC ISO format



2015 ADM5/2/1/0 boundaries for all of Japan; area in red, over Sapporo, is available as sample data. Inset: detail over Tokyo Bay

CENSUS QUESTIONS

Below is a representative sample of census questions included in the Japan 2015 Census.

1. Demographic

Relationship / Sex / Age / Marital status

2. Migration

Duration of residence / Place of previous residence

3. Social

School attendance / Location of educational institution

4. Economic

Activity status / Status in employment / Income / Institutional sector / Place of work /

Occupation / Industry

5. Housing

Living quarters / Occupancy status / Ownership / Occupancy by one or more households / Number of occupants / Building type / Dwellings in the building

For more information about the Japan 2015 Census, including the availability of corresponding non-GIS materials (published results, supporting questionnaires, other census ephemera, etc.), please contact geospatial@eastview.com