

More than numbers. Census data provides unparalleled insight into the lives of individuals. East View presents the Laos 2015 Census as part of the East View Global Census Archive® (GCA). The Laos 2015 Census addresses a wide range of topics at the highest level of detail possible.

Making information available. When initially acquired, the census data is stored in a complex database structure, with attribute descriptions in Lao, limiting access to those with significant database management and programming experience. East View simplifies access, formatting the collection into an easy-to-use geodatabase which can be visualized using any GIS software and providing a comprehensive guide. Additionally, East View provides the original census documentation, allowing researchers to see first-hand how the data was gathered.

Note: The Laos 2005 Census (GIS Edition) is also available through GCA

CENSUS OVERVIEW

Year: 2015	Polygons at ADM: 8,499
ADM Level: 3	Number of Questions: 27
Population Coverage %: 99.8	Number of Answers: 167
Geography Coverage %: 97.4	Data Points: 1,419,333
Smallest Geography Name: Villages	Urban/FG: FG

Notes

- Population Coverage % indicates the percentage of total population of the country during the census year that this census covers
- Geography Coverage % indicates the percentage of the total area of the country covered by the ADM polygons in this census
- Urban/FG indicates if this census provides Full Geographic (FG) coverage or if coverage is limited to Urban (U) or populated places

DELIVERABLES

The Laos 2015 Census has 99.8% population coverage, over 1.4 million data points, and consists of:

Geodatabase

- Intuitive organization of census data
- Administrative boundary vector data at ADM 3 (Villages) for 8,499 census units
- Vector and aggregated tabular data at the Villages level

Shapefiles

- All vector and census data in ESRI Shapefile format

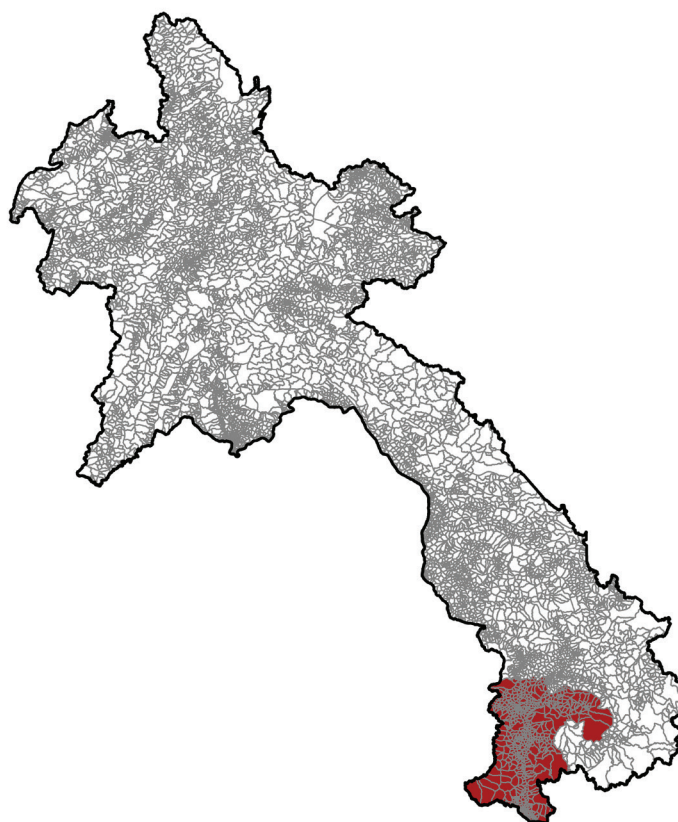
Census Guide

- Detailed descriptions for up to 167 census variables

Census Questionnaire

Metadata

- Full attribute level metadata in FGDC ISO format



ADM 3/0 boundaries for all of Laos; area in red (Champasak province) available as sample data

CENSUS QUESTIONS

Below is a representative sample of census questions included in the Laos 2015 Census:

1. Demographic

Sex / Birth data and age / Marital status / Fertility

2. Migration

Usual residence

3. Social

Literacy / School attendance / Religion / Ethnicity and indigenous peoples / Disability

4. Economic

Industry / Status in employment

5. Housing

Useful floor space / Drinking water / Toilet / Fuel used for cooking / Lighting and/or electricity / Construction material of outer walls / Construction material of floor, roof / Characteristics of head or other reference member of household / Information and communications technology devices / Outdoor space

For more information about the Laos 2015 Census, including the availability of corresponding non-GIS materials (published results, supporting questionnaires, other census ephemera, etc.), please contact geospatial@eastview.com