

**More than numbers.** Census data provides unparalleled insight into the lives of individuals. East View presents the Nicaragua 1995 Census as part of the East View Global Census Archive® (GCA). The Nicaragua 1995 Census addresses a wide range of topics at the highest level of detail possible.

**Making information available.** When initially acquired, the census data is stored in a complex database structure, with attribute descriptions in English and Spanish, limiting access to those with significant database management and programming experience. East View simplifies access, formatting the collection into an easy-to-use geodatabase which can be visualized using any GIS software and providing a comprehensive guide. Additionally, East View provides the original census documentation, allowing researchers to see first-hand how the data was gathered.

**Note:** The Nicaragua 2005 Census (GIS Edition) is also available through GCA

## CENSUS OVERVIEW

<b>Year:</b> 1995	<b>Polygons at ADM:</b> 8,136
<b>Population Coverage %:</b> 94	<b>Number of Questions:</b> 53
<b>Geography Coverage %:</b> 84	<b>Number of Answers:</b> 353
<b>Smallest Geography Name:</b> Barrios	<b>Data Points:</b> 2,872,008
<b>ADM Level:</b> 4	<b>Urban/FG:</b> FG

**Notes**

- Population Coverage % indicates the percentage of total population of the country during the census year that this census covers
- Geography Coverage % indicates the percentage of the total area of the country covered by the ADM polygons in this census
- Urban/FG indicates if this census provides Full Geographic (FG) coverage or if coverage is limited to Urban (U) or populated places

## DELIVERABLES

The Nicaragua 1995 Census has 94% population coverage, over 2.8 million data points, and consists of:

**Geodatabase**

- Intuitive organization of census data
- Administrative boundary vector data at ADM 4 (Barrios) for 8,136 census units
- Vector and aggregated tabular data at the Barrios level

**Shapefiles**

- All vector and census data in ESRI Shapefile format

**Census Guide**

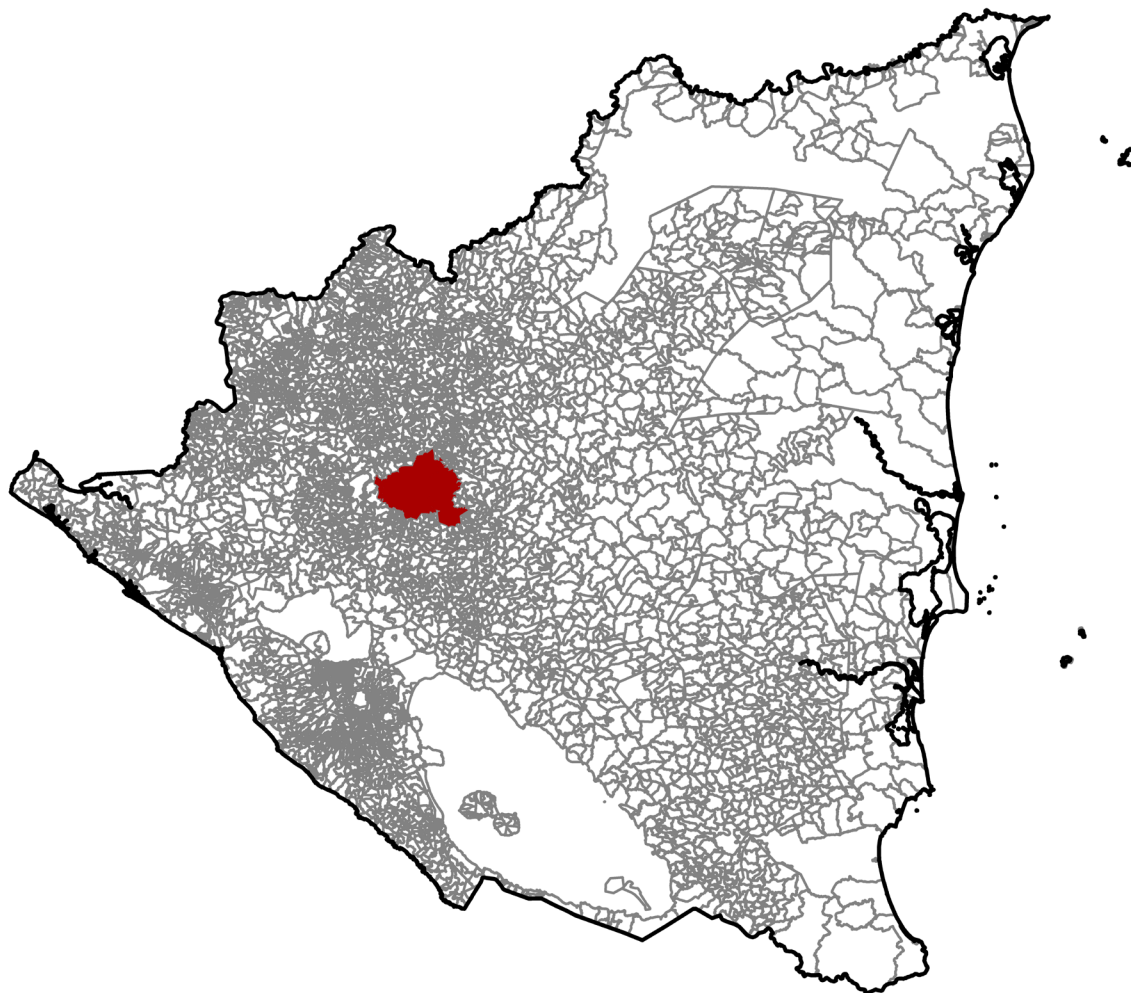
- Detailed descriptions for 353 census variables

**Original Census Documentation and Database**

- Delivered in native format
- Census questionnaires

**Metadata**

- Full attribute level metadata in FGDC ISO format



ADM 4/0 boundaries for all of Nicaragua; area in red, over Matagalpas, available as sample data

## CENSUS QUESTIONS

Below is a representative sample of census questions included in the Nicaragua 1995 Census:

### 1. Demographic

Relationship / Sex / Marital status / Fertility / Mortality

### 2. Migration

Place of previous residence

### 3. Social

Literacy / School attendance / Educational attainment / Social issues

### 4. Economic

Activity status / Occupation / Industry / Status in employment

### 5. Housing

Living quarters / Location of living quarters / Occupancy status / Ownership / Rooms / Bedrooms / Useful floor space / Water supply system / Drinking water / Toilet / Sewage disposal / Bathing facilities / Kitchen / Fuel used for

cooking / Lighting and/or electricity / Solid waste disposal / Heating / Hot water / Piped gas / Building type / State of repair / Information and communications technology devices / Durable household appliances

### 6. Transportation

Vehicles owned

For more information about the Nicaragua 1995 Census, including the availability of corresponding non-GIS materials (published results, supporting questionnaires, other census ephemera, etc.), please contact [geospatial@eastview.com](mailto:geospatial@eastview.com)