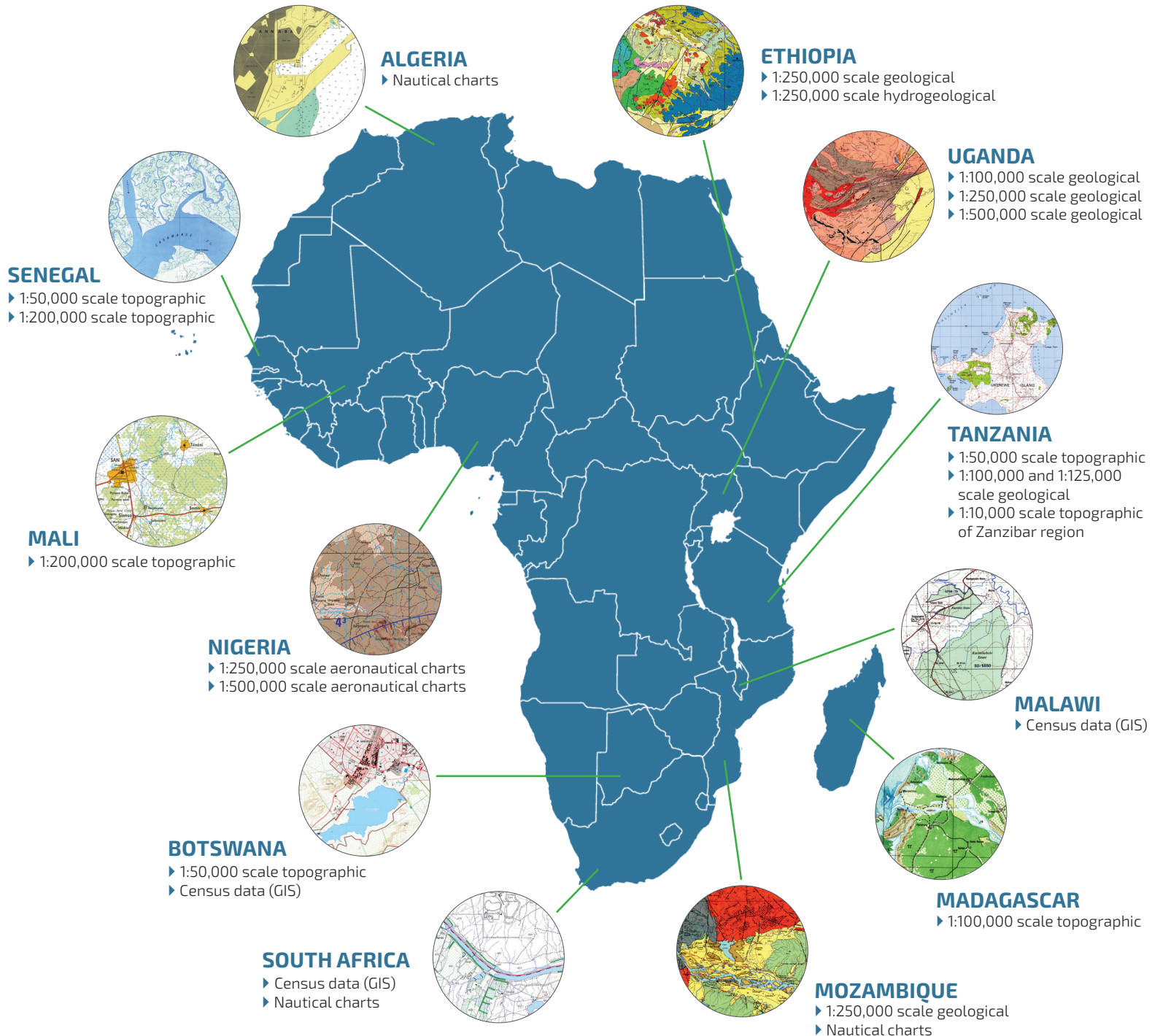


AFRICA GEODATA

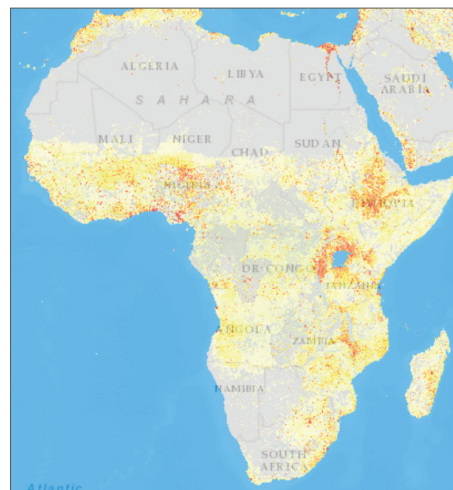
New Acquisitions and Product Highlights



East View Geospatial has an extensive collection of geodata products over Africa beyond these highlighted products. For more information, visit geospatial.com or contact geospatial@eastview.com.

LandScan Population Database

LandScan is an award-winning database developed by the Oak Ridge National Laboratory for the United States Department of Defense. At a resolution of one kilometer, LandScan is the world's most accurate and reliable global population distribution model. It is an ideal resource for sustainable development, risk assessment, strategic planning, humanitarian aid, disaster response and disease modeling, and an essential analysis tool for insurance, telecommunications and other business applications. LandScan is available for purchase by country, region or globally.



MapVault

MapVault provides access to thousands of maps from around the world through an online database. Below is the current title list for the MapVault Africa Package. New map series are added periodically.

TITLE	PUBLISHER	SCALE	LANGUAGE	PUB DATE RANGE	SHEET COUNT
Antananarivo (Madagascar) 1:10,000 Scale Soviet City Plan	Voenno-topograficheskoe upravlenie General'nogo shtaba (Soviet Union)	1:10,000	Russian	1985	1
Botswana 1:250,000 Scale Topographic	Botswana Department of Surveys & Mapping	1:250,000	English	1979-1990	40
Botswana 1:50,000 Scale Topographic	Botswana Department of Surveys & Mapping	1:50,000	English	2007-2014	1,012
Burundi 1:50,000 Scale Topographic (US Military TLM Series)	National Geospatial-Intelligence Agency	1:50,000	English	1994	40
Cabo Verde 1:25,000 Scale Topographic	Carta Militar De Portugal	1:25,000	Portuguese	1968-1978	39
Madagascar 1:50,000 Scale Topographic	Foiben-Taosarintanin'i Madagaskara	1:50,000	French	1955-1988	162
Malawi 1:50,000 Scale Topographic	Department of Surveys	1:50,000	English	1962-1996	153
Nigeria 1:250,000 Scale Aero Chart (EV1501 AIR)	East View Geospatial, Inc.	1:250,000	English	2016	69
Senegal 1:200,000 Scale Topographic	Direction des Travaux géographiques et cartographiques	1:200,000	French	2005-2008	27
Senegal 1:50,000 Scale Topographic	Direction des Travaux géographiques et cartographiques	1:50,000	French	1955-1971	142
South Africa 1:50,000 Scale Topographic	Republic of South Africa, Chief Directorate: Surveys and Mapping	1:50,000	English/Afrikaans	1979-2010	1,912
Somalia (Northern) 1:100,000 Scale Topographic (Y629)	Defense Mapping Agency Topographic Center	1:100,000	English	1988-1989	31
Somalia (Southern) 1:100,000 Scale Topographic (Y630)	Defense Mapping Agency Topographic Center	1:100,000	English	1982-1992	146
Tanzania 1:50,000 Scale Topographic	Surveys and Mapping Division (SMD)	1:50,000	English	1954-1994	1,266
Zanzibar region of Tanzania 1:10,000 Scale Topographic	Directorate of Overseas Surveys, England	1:10,000	English	1982-1986	59
Zimbabwe 1:50,000 Scale Topographic	Surveyor-General, Zimbabwe	1:50,000	English	1960-2005	572

Looking for more Africa coverage? Consider adding MapVault's Core Package, which includes global topographic coverage at scales of 1:500,000, 1:1,000,000 and 1:2,500,000.

East View Geospatial has an extensive collection of geodata products over Africa.
For more information, visit geospatial.com or contact geospatial@eastview.com.