

More than numbers. Census data provides unparalleled insight into the lives of individuals. East View presents the Cambodia 2008 Census as part of the East View Global Census Archive® (GCA). The Cambodia 2008 Census addresses a wide range of topics at the highest level of detail possible.

Making information available. When initially acquired, the census data is stored in a complex database structure, with attribute descriptions in Khmer, limiting access to those with significant database management and programming experience. East View simplifies access, formatting the collection into an easy-to-use geodatabase which can be visualized using any GIS software and providing a comprehensive guide. Additionally, East View provides the original census documentation, allowing researchers to see first-hand how the data was gathered.

Note: The Cambodia 1998 Census (GIS Edition) is also available through GCA

CENSUS OVERVIEW

Year: 2008

Population Coverage %: 99.8

Geography Coverage %: 100

Smallest Geography Name: Village

ADM Level: 4

Points at ADM: 14,073

Number of Questions: 19

Number of Answers: 134

Data Points: 1,885,782

Urban/FG: FG

Notes

- Population Coverage % indicates the percentage of total population of the country during the census year that this census covers
- Geography Coverage % indicates the percentage of the total area of the country covered by the ADM polygons in this census
- Urban/FG indicates if this census provides Full Geographic (FG) coverage or if coverage is limited to Urban (U) or populated places

DELIVERABLES

The Cambodia 2008 Census has 99.8% population coverage, nearly 1.9 million data points, and consists of:

Geodatabase

- Intuitive organization of census data
- Administrative boundary vector data at ADM 4 (Village) for 14,073 census units
- Vector and aggregated tabular data at the Village level

Shapefiles

- All vector and census data in ESRI Shapefile format

Census Guide

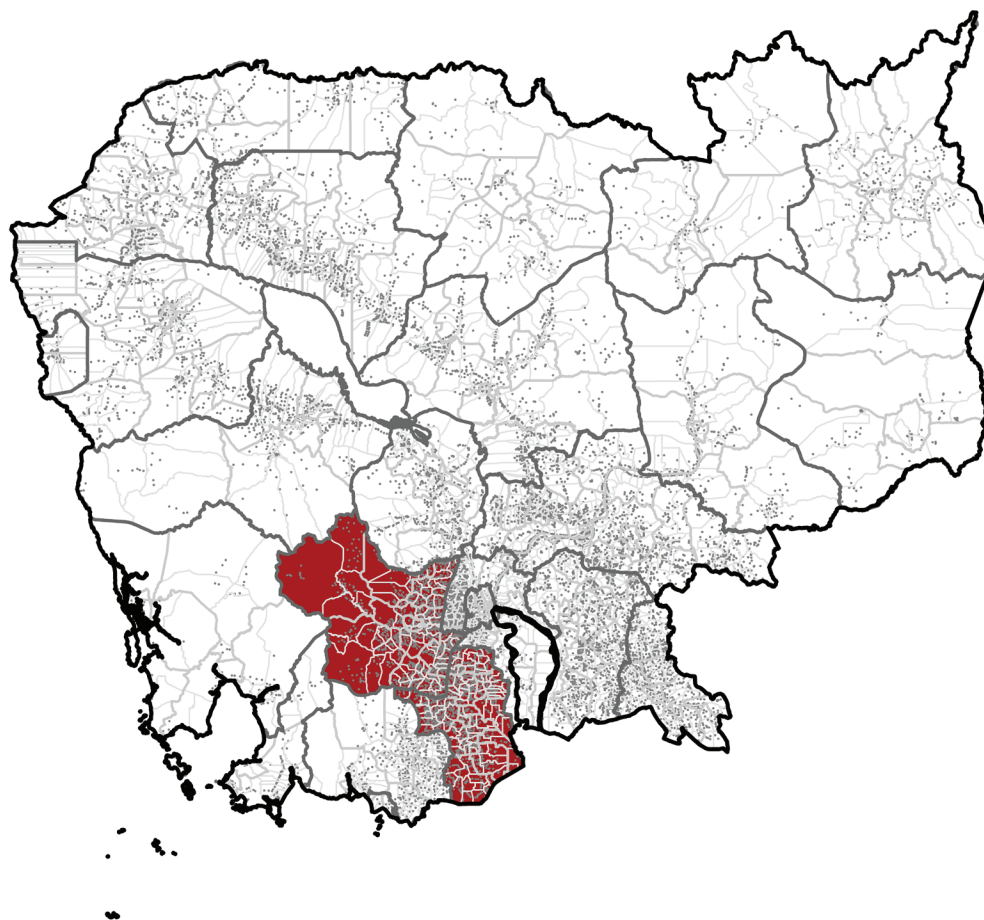
- Detailed descriptions for 134 census variables

Original Census Documentation

- Delivered in native format
- Census questionnaires

Metadata

- Full attribute level metadata in FGDC ISO format



ADM 4/3/2/1/0 boundaries for all of Cambodia; area in red, over Kampong Speu and Takeo provinces, is available as sample data

CENSUS QUESTIONS

Below is a representative sample of census questions included in the Cambodia 2008 Census.

1. Demographic

Sex / Birth data and age / Marital status / Age at first marriage

2. Social

Literacy / School attendance / Educational attainment / Religion / Disability

3. Economic

Activity status / Status in employment / Institutional sector

4. Housing

Occupancy status / Ownership / Drinking water / Toilet / Fuel used for cooking / Lighting and/or electricity / Number of occupants / Characteristics of head or other reference member of household

For more information about the Cambodia 2008 Census, including the availability of corresponding non-GIS materials (published results, supporting questionnaires, other census ephemera, etc.), please contact geospatial@eastview.com