

GIS Edition

**COLOMBIA
2005 CENSUS**

- 90.7% population coverage
- 50,685,022 data points
- ADM 6 for 261,263 census units
- 194 census variables

More than numbers. Census data provides unparalleled insight into the lives of individuals. East View presents the Colombia 2005 Census as part of the East View Global Census Archive® (GCA). The Colombia 2005 Census addresses a wide range of topics at the highest level of detail possible.

Making information available. When initially acquired, the census data is stored in a complex database structure, with attribute descriptions in Spanish, limiting access to those with significant database management and programming experience. East View simplifies access, formatting the collection into an easy-to-use geodatabase which can be visualized using any GIS software and providing a comprehensive guide. Additionally, East View provides the original census documentation, allowing researchers to see first-hand how the data was gathered.

Note: The Colombia 2018 Census (GIS Edition) is also available through GCA

CENSUS OVERVIEW

Year: 2005	Polygons at ADM: 261,263
Population Coverage %: 90.7	Number of Questions: 42
Geography Coverage %: 0.3	Number of Answers: 194
Smallest Geography Name: Manzanas	Data Points: 50,685,022
ADM Level: 6	Urban/FG: Urban

- Notes**
- Population Coverage % indicates the percentage of total population of the country during the census year that this census covers
 - Geography Coverage % indicates the percentage of the total area of the country covered by the ADM polygons in this census
 - Urban/FG indicates if this census provides Full Geographic (FG) coverage or if coverage is limited to Urban (U) or populated places

DELIVERABLES

The Colombia 2005 Census has 90.7% population coverage, over 50 million data points, and consists of:

Geodatabase

- Intuitive organization of census data
- Administrative boundary vector data at ADM 6 (Manzanas) for 261,263 census units
- Vector and aggregated tabular data at the Country and Manzana levels

Shapefiles

- All vector and census data in ESRI Shapefile format

Census Guide

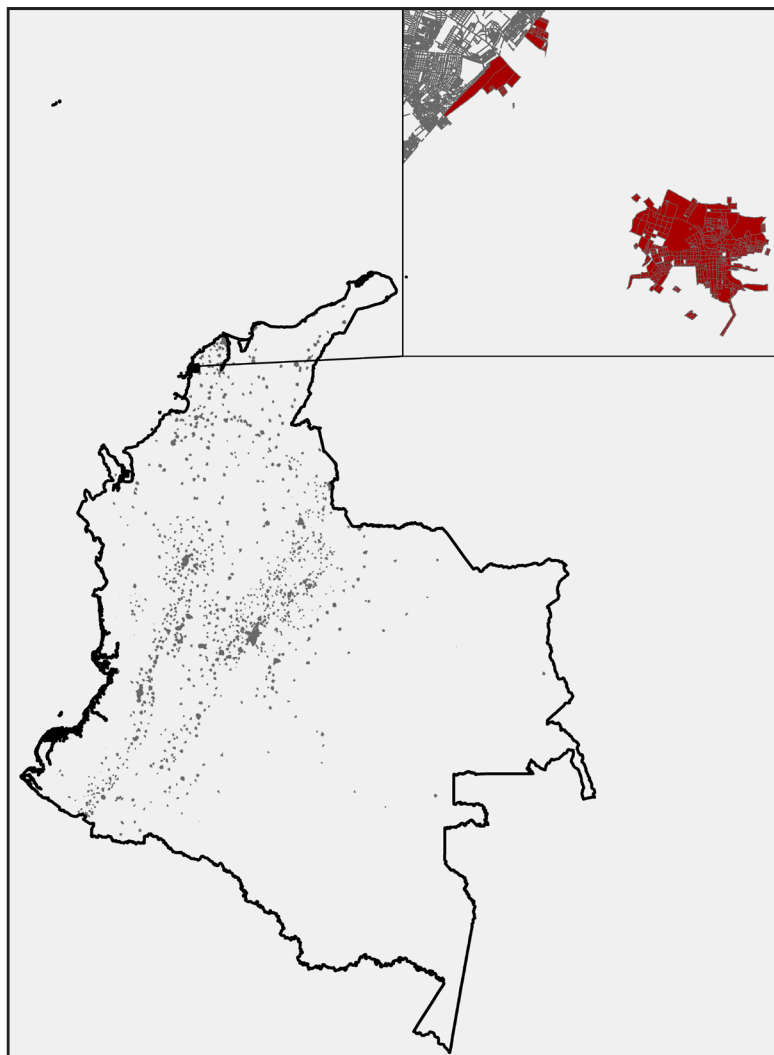
- Detailed descriptions for 194 census variables

Original Census Documentation and Database

- Delivered in native format
- Census questionnaires

Metadata

- Full attribute level metadata in FGDC ISO format



ADM 6/0 boundaries for all of Colombia;
inset detail over Turbaco with area in red
available as sample data

CENSUS QUESTIONS

Below is a representative sample of census questions included in the Colombia 2005 Census:

1. Demographic

Sex / Marital status / Fertility

2. Migration

Place of birth / Place of previous residence

3. Social

Literacy / School attendance / Educational attainment / Field of education / Disability

4. Economic

Activity status / Industry / Status in employment / Income / Institutional sector / Place of work

5. Housing

Living quarters / Occupancy status / Ownership / Bathing facilities / Kitchen / Fuel used for cooking / Lighting and/or electricity / Heating / Hot water / Gas / Use of housing unit / Building type

6. Transportation

Vehicles owned / Primary transportation type

For more information about the Colombia 2005 Census, including the availability of corresponding non-GIS materials (published results, supporting questionnaires, other census ephemera, etc.), please contact geospatial@eastview.com