

**More than numbers.** Census data provides unparalleled insight into the lives of individuals. East View presents the Dominican Republic 2010 Census as part of the East View Global Census Archive® (GCA). The Dominican Republic 2010 Census addresses a wide range of topics at the highest level of detail possible. Available for purchase, this is the premier source of demographic data for academic research.

**Making information available.** When initially acquired, the census data is stored in a complex database structure, with attribute descriptions in Spanish, limiting access to those with significant database management and programming experience. East View simplifies access, formatting the collection into an easy-to-use geodatabase which can be visualized using any GIS software and providing a comprehensive guide. Additionally, East View provides the original census documentation, allowing researchers to see first-hand how the data was gathered.

## CENSUS OVERVIEW

<b>Year:</b> 2010	<b>Polygons at ADM:</b> 12,565
<b>Population Coverage %:</b> 100	<b>Number of Questions:</b> 60
<b>Geography Coverage %:</b> 100	<b>Number of Answers:</b> 756
<b>Smallest Geography Name:</b> Barrios	<b>Data Points:</b> 9,499,140
<b>ADM Level:</b> 5	<b>Urban/FG:</b> FG

### Notes

- Population Coverage % indicates the percentage of total population of the country during the census year that this census covers
- Geography Coverage % indicates the percentage of the total area of the country covered by the ADM polygons in this census
- Urban/FG indicates if this census provides Full Geographic (FG) coverage or if coverage is limited to Urban (U) or populated places

## DELIVERABLES

The Dominican Republic 2010 Census has 100% population coverage, over 9 million data points, and consists of:

### Geodatabase

- Intuitive organization of census data
- Administrative boundary vector data at ADM 5 (Barrios) for 12,565 census units
- Vector and aggregated tabular data at the Barrios level

### Shapefiles

- All vector and census data in ESRI Shapefile format

### Census Guide

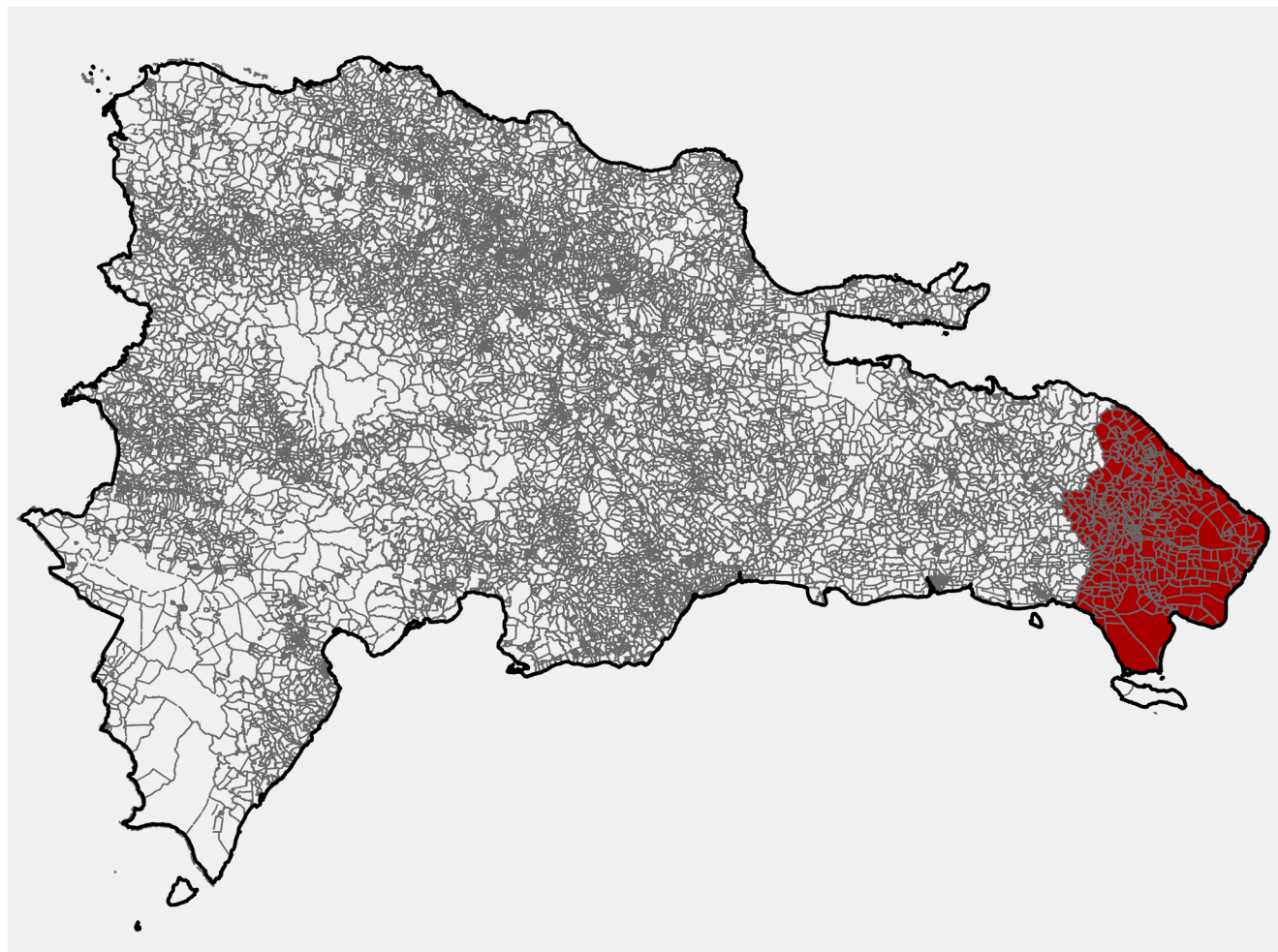
- Detailed descriptions for 756 census variables

### Original Census Documentation and Database

- Delivered in native format
- Census questionnaires

### Metadata

- Full attribute level metadata in FGDC ISO format



ADM 5/0 boundaries for all of the Dominican Republic, with Punta Cana highlighted in red (area in red included in sample)

## CENSUS QUESTIONS

Below is a representative sample of census questions included in the Dominican Republic 2010 Census:

### 1. Demographic

Sex / Birth data and age / Marital status / Fertility / Mortality

### 2. Migration

Place of birth / Usual residence

### 3. Social

Literacy / School attendance / Educational attainment / Field of education / Disability

### 4. Economic

Activity status / Status in employment / Employment in informal sector

### 5. Housing

Living quarters / Location of living quarters / Occupancy status / Rooms / Bedrooms / Useful floor space / Water supply system / Drinking water / Toilet / Sewage disposal / Bathing facilities / Kitchen / Fuel used for cooking / Lighting

and/or electricity / Heating / Hot water / Piped gas / Building type / Use of housing unit / Occupancy by one or more households / Number of occupants / Building type / Construction material of outer walls / Construction material of floor, roof / Elevator / Farm building / State of repair / Characteristics of head or other reference member of household / Tenure / Information and communications technology devices / Cars / Durable household appliances / Outdoor space

**For more information about the Dominican Republic 2010 Census, including the availability of corresponding non-GIS materials (published results, supporting questionnaires, other census ephemera, etc.), please contact [geospatial@eastview.com](mailto:geospatial@eastview.com)**