

More than numbers. Census data provides unparalleled insight into the lives of individuals. East View presents the Latvia 2011 Census as part of the East View Global Census Archive® (GCA). The Latvia 2011 Census addresses a wide range of topics at the highest level of detail possible.

Making information available. When initially acquired, the census data is stored in a complex database structure, with attribute descriptions in English and Latvian, limiting access to those with significant database management and programming experience. East View simplifies access, formatting the collection into an easy-to-use geodatabase which can be visualized using any GIS software and providing a comprehensive guide. Additionally, East View provides the original census documentation, allowing researchers to see first-hand how the data was gathered.

CENSUS OVERVIEW

Year: 2011	Polygons at ADM: 587
Population Coverage %: 100	Number of Questions: 32
Geography Coverage %: 100	Number of Answers: 6,853
Smallest Geography Name: Apkaimes	Data Points: 4,022,711
ADM Level: 3	Urban/FG: FG

Notes

- Population Coverage % indicates the percentage of total population of the country during the census year that this census covers
- Geography Coverage % indicates the percentage of the total area of the country covered by the ADM polygons in this census
- Urban/FG indicates if this census provides Full Geographic (FG) coverage or if coverage is limited to Urban (U) or populated places

DELIVERABLES

The Latvia 2011 Census has 100% population coverage, over 4 million data points, and consists of:

Geodatabase

- Intuitive organization of census data
- Administrative boundary vector data at ADM 3 (Apkaimes) for 587 census units
- Vector and aggregated tabular data at the Apkaimes level

Shapefiles

- All vector and census data in ESRI Shapefile format

Census Guide

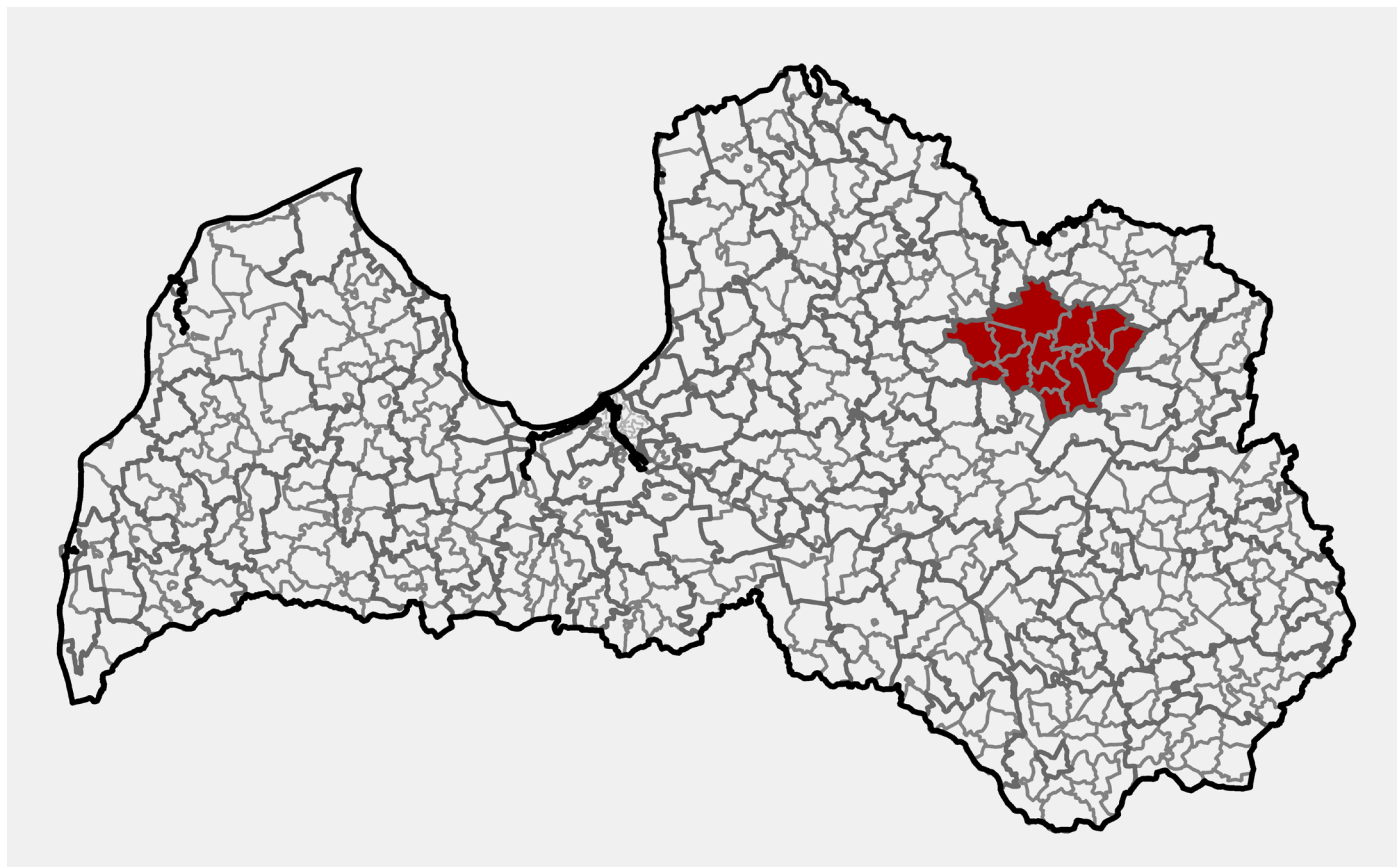
- Detailed descriptions for 6,853 census variables

Original Census Documentation and Database

- Delivered in native format
- Census questionnaires

Metadata

- Full attribute level metadata in FGDC ISO format



2011 ADM 0/2/3 boundaries for all of Latvia; area in red, over Gulbernes County (Novads), is available as sample data

CENSUS QUESTIONS

Below is a representative sample of census questions included in the Latvia 2011 Census.

1. Demographic

Relationship / Sex / Birth data and age / Marital status

2. Migration

Place of birth / Citizenship

3. Social

Literacy / School attendance / Educational attainment / Religion / Language / Ethnicity and indigenous peoples

4. Economic

Activity status / Occupation / Industry / Status in employment / Institutional sector / Employment in informal sector / Place of work

5. Housing

Living quarters / Location of living quarters / Occupancy status / Ownership / Rooms / Bedrooms / Useful floor space / Water supply system / Drinking water / Toilet / Sewage disposal / Bathing facilities / Kitchen / Number of occupants / Building type / Year or period of construction / Characteristics of head or other reference member of household

For more information about the Latvia 2011 Census, including the availability of corresponding non-GIS materials (published results, supporting questionnaires, other census ephemera, etc.), please contact geospatial@eastview.com