



GIS Edition MEXICO / MÉXICO 2010 CENSUS

- 68.5% population coverage
- 439,198,110 data points
- ADM 5 for 2,311,569 census units
- 190 census variables

More than numbers. Census data provides unparalleled insight into the lives of individuals. East View presents the Mexico 2010 Census as part of the East View Global Census Archive® (GCA). The Mexico 2010 Census addresses a wide range of topics at the highest level of detail possible.

Making information available. When initially acquired, the census data is stored in a complex database structure, with attribute descriptions in Spanish, limiting access to those with significant database management and programming experience. East View simplifies access, formatting the collection into an easy-to-use geodatabase which can be visualized using any GIS software and providing a comprehensive guide. Additionally, East View provides the original census documentation, allowing researchers to see first-hand how the data was gathered.

Note: The Mexico 2020 Census (GIS Edition) is also available through GCA

CENSUS OVERVIEW

Year: 2010	Polygons at ADM: 2,311,569
Population Coverage %: 68.5	Number of Questions: 13
Geography Coverage %: 1.6	Number of Answers: 190
Smallest Geography Name: Manzanas	Data Points: 439,198,110
ADM Level: 5	Urban/FG: Urban

Notes

- Population Coverage % indicates the percentage of total population of the country during the census year that this census covers
- Geography Coverage % indicates the percentage of the total area of the country covered by the ADM polygons in this census
- Urban/FG indicates if this census provides Full Geographic (FG) coverage or if coverage is limited to Urban (U) or populated places

DELIVERABLES

The Mexico 2010 Census has 68.5% population coverage, over 400 million data points, and consists of:

Geodatabase

- Intuitive organization of census data
- Administrative boundary vector data at ADM 5 (Manzanas) for 2,311,569 census units
- Vector and aggregated tabular data at the Manzanas level

Shapefiles

- All vector and census data in ESRI Shapefile format

Census Guide

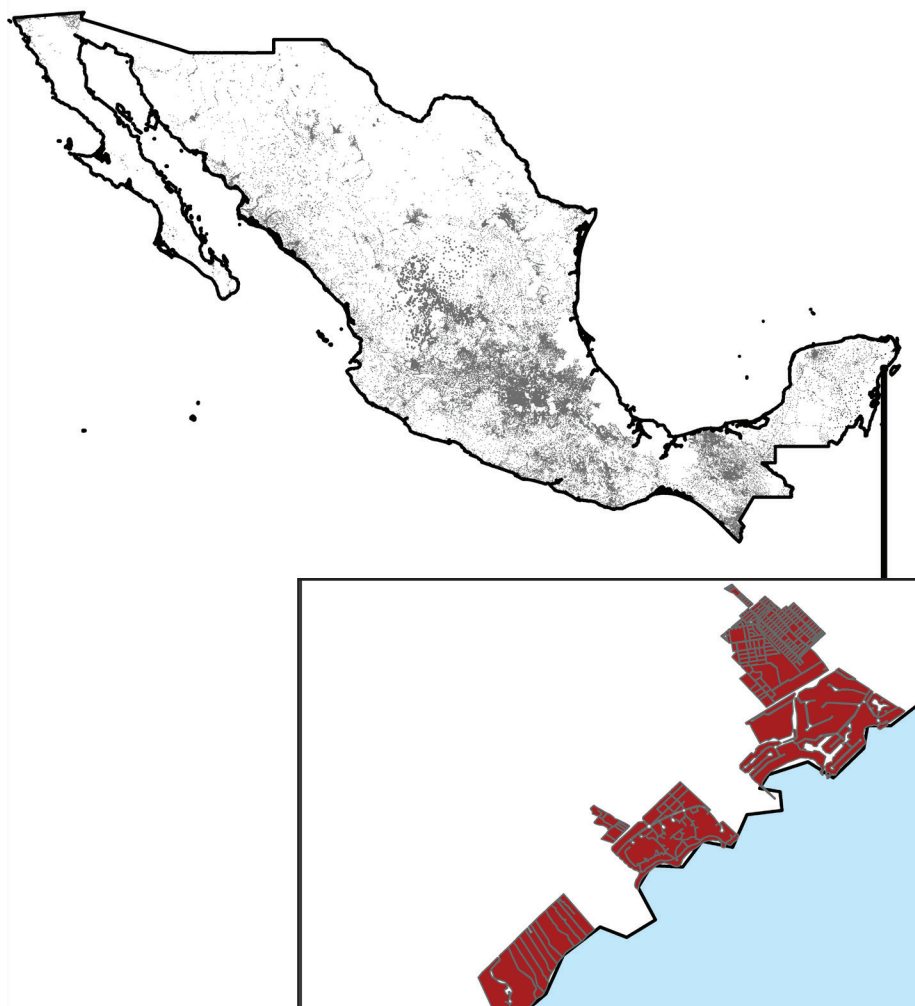
- Detailed descriptions for 190 census variables

Original Census Documentation

- Delivered in source format
- Census questionnaires

Metadata

- Full attribute level metadata in FGDC ISO format



ADM 5/0 boundaries for all of Mexico; Inset: detail over Tulum (area in red included in sample)

CENSUS QUESTIONS

Below is a representative sample of census questions included in the Mexico 2010 Census:

1. Demographic

Sex / Birth data and age / Marital status / Fertility

2. Migration

Place of birth / Usual residence

3. Social

Literacy / School attendance / Educational attainment / Religion / Language / Disability

4. Economic

Activity status / Status in employment / Institutional sector / Employment in informal sector / Place of work

5. Housing

Occupancy status / Rooms / Bedrooms / Water supply system / Drinking water / Toilet / Sewage disposal / Bathing facilities / Kitchen / Lighting and/or electricity / Construction material of

floor, roof / State of repair / Characteristics of head or other reference member of household / Information and communications technology devices / Durable household appliances

6. Transportation

Vehicles owned

For more information about the Mexico 2010 Census, including the availability of corresponding non-GIS materials (published results, supporting questionnaires, other census ephemera, etc.), please contact geospatial@eastview.com