

GIS Edition TANZANIA 2012 CENSUS

- 98.7% population coverage
- 360,863,055 data points
- ADM 5 for 108,465 census units
- 3,327 census variables

More than numbers. Census data provides unparalleled insight into the lives of individuals. East View presents the Tanzania 2012 Census as part of the East View Global Census Archive® (GCA). The Tanzania 2012 Census addresses a wide range of topics at the highest level of detail possible.

Making information available. When initially acquired, the census data is stored in a complex database structure, with attribute descriptions in English, limiting access to those with significant database management and programming experience. East View simplifies access, formatting the collection into an easy-to-use geodatabase which can be visualized using any GIS software and providing a comprehensive guide. Additionally, East View provides the original census documentation, allowing researchers to see first-hand how the data was gathered.

CENSUS OVERVIEW

Year: 2012

Population Coverage %: 98.7

Geography Coverage %: 100

Smallest Geography Name: Enumeration Areas

ADM Level: 5

Polygons at ADM: 108,465

Number of Questions: 62

Number of Answers: 3,327

Data Points: 360,863,055

Urban/FG: FG

Notes

- Population Coverage % indicates the percentage of total population of the country during the census year that this census covers
- Geography Coverage % indicates the percentage of the total area of the country covered by the ADM polygons in this census
- Urban/FG indicates if this census provides Full Geographic (FG) coverage or if coverage is limited to Urban (U) or populated places

DELIVERABLES

The Tanzania 2012 Census has 98.7% population coverage, over 360 million data points, and consists of:

Geodatabase

- Intuitive organization of census data
- Administrative boundary vector data at ADM 5 (Enumeration Area) for 108,465 census units
- Vector and aggregated tabular data at the Departamentos level

Shapefiles

- All vector and census data in ESRI Shapefile format

Census Guide

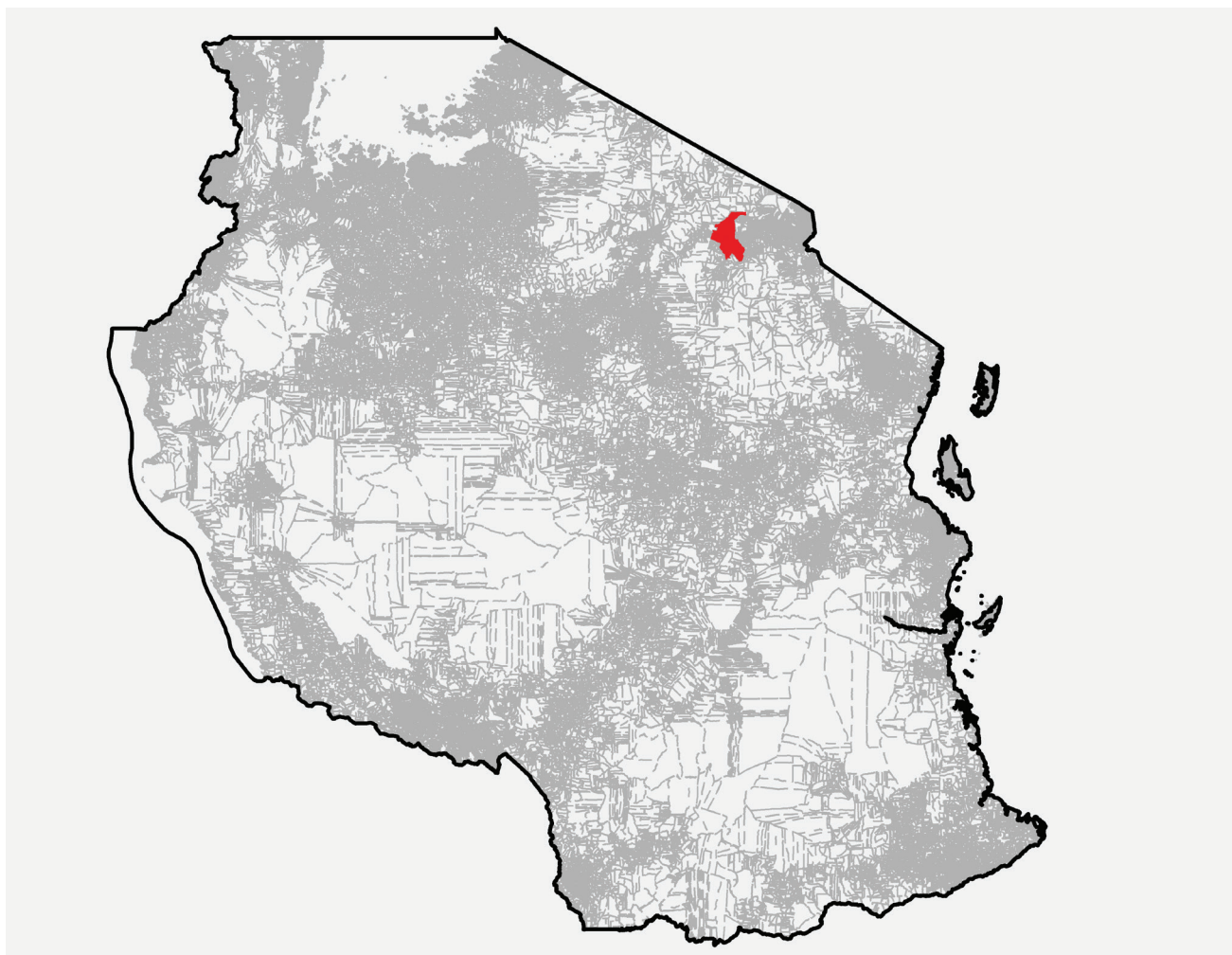
- Detailed descriptions for 3,327 census variables

Original Census Documentation and Database

- Delivered in native format
- Census questionnaires

Metadata

- Full attribute level metadata in FGDC ISO format



ADM 5/0 boundaries for all of Tanzania; area in red, over the city of Arusha, is available as sample data

CENSUS QUESTIONS

Below is a representative sample of census questions included in the Tanzania 2012 Census.

1. Demographic

Sex / Birth data and age / Mortality

2. Migration

Place of birth / Citizenship / Place of previous / Usual residence

3. Social

Literacy / School attendance / Educational attainment / Disability

4. Economic

Activity status / Occupation / Industry / Status in employment

5. Housing

Location of living quarters / Rooms / Occupancy status / Ownership / Water supply system / Drinking water / Toilet / Sewage disposal / Bathing facilities / Kitchen / Fuel used for cooking / Lighting and/or electricity / Solid waste disposal / Heating / Hot water / Piped gas / Use

of housing unit / Construction material of outer walls / Construction material of floor, roof / Characteristics of head or other reference member of household / Tenure / Information and communications technology devices / Durable household appliances / Outdoor space

6. Transportation

Vehicles owned

For more information about the Tanzania 2012 Census, including the availability of corresponding non-GIS materials (published results, supporting questionnaires, other census ephemera, etc.), please contact geospatial@eastview.com